

FREE SPIRIT



April 2025

FEATURES

Willow O The Wisps, Red Flags,
Relationship Tarot Readings

PLUS

April Horoscopes
& Reader Profiles

Téa Leoni

Comedy/horror: When
Unicorns strike back!

discover your future, release your past

Editor's letter

We are all about Spring & rainbows in this edition. We continue our Rainbow of Angel series – this time it is the turn of Green Ray – Archangel Raphael. Plus, we have a rainbow of healing crystals to celebrate Easter.

We also cover Easter activities in our 'In the News' section, and while you are there, look out for changes to our Text Readings & Pre-Pay services.

Vanessa immerses us in nature as a continuation of her holistic series, and Sarah delves into Will O The Wisp! Talking of readers, we catch back up with Angel.

If love is on your mind, then why not turn to our article on Relationship Readings using Tarot – and specifically looking for 'red flags'.

We look at reasons to explore astrology in more detail, and Chrystalte tells us what the stars have in mind for us.

Just for fun, we feature a film called the 'Death of a Unicorn', judging by the trailer, I think it might be as a funny as it sounds – ha!

Should you happen to get left with any 'Easter' chocolate or snacks – then why not check out our blog from last year where we look at how to make best use of those delicious bits and pieces:

www.psychiclight.com/easter-leftovers/

Charlotte

Marketing

Psychic Light Ltd. PO Box 435, Sittingbourne, Kent ME9 0WB.

We want to reassure you that we take the processing and handling of your data very seriously. We do not and never will sell your data to a third-party or allow any third-party access to your data for marketing purposes.

If you have opted-in to receive marketing materials from us, we will continue to send to you until such time as you change your preferences or unsubscribe, or we deem a suitable amount of time has passed since you last used our service and consider that you are no longer interested.

We want to ensure that it is as straightforward for you as possible to change your marketing preferences and unsubscribe should you wish to, the quickest way to do that is to email us providing the relevant information to:

unsubscribe@bureautelecoms.com

www.psychiclight.com/privacy-notice/
www.psychiclight.com/terms-and-conditions/

INSIDE FREE SPIRIT Magazine April 2025



Téa Leoni Image: Everett Collection / Shutterstock.com

PAY BY PHONE BILL

0906 111 0901

PAY BY CARD

0800 915 2347

£1.50 per minute plus your phone company's access charge. £32.95 for the first 20 minutes, £1.50 per minute thereafter.

Choose a reader to begin your journey

Pick from our many talented psychics, all with different techniques



PIN: 2727

Bryony

"Bryony is concise and very insightful in her advice.

A no-nonsense psychic who was direct and honest.

Thank you and hope to connect with you again."

Veena



PIN: 1180

Ellie

"Hi Ellie, thank you for your assistance and bringing forth light into a dark situation. You are the Mother Earth power house. Keep going. All the best Earth Angel x."
Belinda



PIN: 5115

Jasmine

Jasmine is a clairsentient, clairvoyant medium; she has worked with her guides for 35+ years. She is a natural healer and has a unique affinity with animals. Jasmine can transfigure Spirit and loves the crystal ball, healing runes and numerology.



PIN: 4499

Josephine

"I had a wonderful reading with Josephine. It was in line with what I've heard before, plus she mentioned some very exciting career developments that are meant to happen by April so let's see how that goes."
Margaret



PIN: 1881

Mariah

Mariah is a medium, clairvoyant and healer; her style is honest and compassionate. Through Spirit, she will support, empower and illuminate, just as her guides have done for her. Mariah specialises in bringing clarity to situations which may be causing you pain and stress.



PIN: 5055

Mary

Mary is naturally sensitive and an intuitive psychic, medium and clairvoyant; who offers straight-to-the-point readings. Energy readings are one of her specialities; she can pick up on emotional, physical and psychological blocks without hesitation.

Readings under UK law are deemed to be for entertainment only. Helpline: 0800 156 0580.

A Rainbow of Crystals for Healing this Easter



There is nothing quite like seeing a rainbow, both young and old take delight in them. Springtime is a great time to see them as the unpredictable weather, with sudden shifts from sunshine to rain showers, and the sun is at about 42 degrees above the horizon creates the ideal conditions for rainbow formation.

Springtime also brings Easter, with Easter Sunday falling on the 20th of April. Perhaps you will paint some eggs, attend church, enjoy some hot cross buns, or indulge in a chocolate egg or two!

If you feel like boosting your spirituality this spring and enjoy crystal healing or already have a crystal altar set up at home, why not consider these five crystals for your collection and healing rituals? Each one of them comes in a rainbow variety.

MOONSTONE

Rainbow moonstone's hue shifts, appearing brighter or dimmer depending on conditions and individuals. This crystal influences emotions, dreams, and love. Ideal for attracting faeries, it's recommended to have a fragment in your garden during springtime. The vibrant colours within the stone captivate attention and amplify enchantment and mystique. Placing it near your spring herbs can boost their therapeutic properties. Moonstone's energy is most potent when exposed to the light of a full moon.

OBSDIAN

Rainbow Obsidian possesses immense power, overseeing concepts of truth, justice, and communication. Its energy is strong and should be concealed when not in use. While appearing deep black, its iridescent rainbow hues shine through when exposed to light. Like other Obsidians, it serves as an excellent tool for divination. In fact, the earliest mirrors were crafted from Obsidian.

OPAL

The Rainbow Opal crystal displays stunning beauty with its rainbow effect, which can be found in both black and white opals. However, seeking out the rainbow version is highly recommended as it is known as a stone of wishes. Additionally, this mesmerising crystal serves as a powerful tool for connecting with Spirit and offers uplifting healing properties.

PYRITE

Rainbow Pyrite serves as an ideal crystal for connecting with earth and water elements. Displaying hues of yellow, green, pink, and blue, it influences values, security, and material wealth. Placing a Rainbow Pyrite piece in your garden can enhance confidence among guests during outdoor gatherings. This crystal is particularly helpful for individuals unfamiliar with others at social events. Additionally, Rainbow Pyrite is effective in repelling negative energies, making it valuable for ghost hunters.

QUARTZ

Rainbow Quartz is a unique gemstone that combines the powerful properties of clear quartz with the captivating essence of the rainbow. This fusion results in an enhanced energy that boosts confidence and courage. The dual nature of rainbow quartz magnifies its inherent traits, including passion, creativity, initiative, and faith.

Ref: A Spellbook for the Seasons, Tudor Beth

In the News...

Psychic Text Readings

Do you use our Psychic Text Reading service? If so, we wanted to let you know that the short code (the 5-digit number) you use to text us has changed. Please ensure you are using: 85358 when you contact us. You can ask a question and get a reply from one of our friendly and insightful psychics.

Text LIGHT + your question to 85358

£1 per message, £3 total. Readings sent as 3 messages. Messages sent by you are charged at standard network rate.

18+ only. You must have bill-payer's permission. Service details will appear on your phone bill. Cannot discuss Health, Pregnancy, Finance or Legal. Entertainment Only. We may send free promotional messages – To opt out text PLSTOP to 85358. SP: Allstar Psychics Ltd. Helpdesk - info@allstarpsychics.co.uk or call 0208 712 5690.

We have readers available 24/7 - so why not Text with us today? www.psychiclight.com/text-readings/



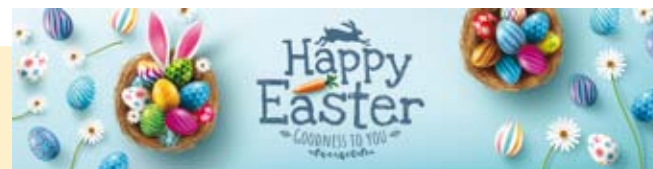
Pre-Pay Service

Keep an eye on our emails, social posts & website – as we are hoping to bring some Pre-Pay changes to Psychic Light soon....

www.psychiclight.com/pre-pay-faqs/
www.psychiclight.com/pre-pay-minutes/

We have listened to our clients, and we understand that some of you prefer to set up and manage your Pre-Pay account online rather than by phone. Therefore, in the future, you will have that option. However, if you prefer the current set-up, you can continue as usual.

Remember that Pre-Pay offers excellent value year-round. It costs £30 for 20 minutes (the normal credit card rate is £32.95). Additionally, we provide 10% bonus minutes when you top up with 40 minutes or more!



Easter

Easter is later in the calendar this year, with Easter Sunday being the 20th of April. If you have children at home, or look

after grandchildren, then for most, the Easter weekend falls right at the end of their 2-weeks off. So, you may well be looking for ways to keep them entertained, beyond eating chocolate!

The National Trust is running Easter Egg Hunts at many of its locations, check if there is somewhere near you: www.nationaltrust.org.uk/visit/whats-on/easter-egg-hunts?type=event

Visit England is also listing Easter events: www.visitengland.com/easter-events-near-me-england
You can also try English Heritage: www.english-heritage.org.uk/easter/

If you are based in the capital, then try Visit London for an extensive list of all things Easter in 2025: www.visitlondon.com/things-to-do/event/7883676-easter-weekend

Whether you celebrate the season or not, I'll leave you with this funny thought:

"Easter is the only time when it's perfectly safe to put all of your eggs in one basket." - Anon

Reader Profile

Angel

PIN: 1441



Hi, I'm Angel – being a clairvoyant, healer, medium and clairaudient has allowed me to reach out and connect to people all over the world. In all different languages, as we all understand the one universal soul language of love...pure light of the divine source.

I have worked alongside ascended masters and powerful archangels from the day I was born. My soul guides go far back beyond my existence – an old soul re-born a psychic soul...the never-ending circle! My soul meaning name is 'Saviour of the Sorrowful Souls', my Native American name is 'Eagle Eye.'

I was born in Bournemouth, on the lovely south coast of England. I went on to travel all around the world sharing my psychic gift, gaining more and more insight every step of the way. Whilst on my travels I visited a Monastery in Nepal, high up in the Himalaya's. Such a peaceful tranquil place, it was there I was blessed by a Monk. I gained more wisdom and was really blessed by such an enlightening experience.

I believe we are all masters of our own destiny, following our own path which sometimes diverts and takes us the long way round. We learn our own lessons along the way which makes it our own unique journey. But often our beliefs hold us back in life, learning to trust and let go and to live in the present flow is key to success and happiness.

I work very closely with life energy patterns, which I can sense over the phone no-matter the distance - on a soul level there is no distance. I love to inspire and motivate people, to share my gift wherever I am able to. I also have a great connection within the animal kingdom, forming deep bonds very quickly through soul language, meaning I often encounter animal spirits during readings.

When you are a healer, you naturally radiate a healing energy in your vicinity. The physical body is the most dense, next comes the Etheric body then Astral, Mental and Spiritual. The Life Force is the universal energy. When there is an adequate flow of Ch'i we feel strong and well. However, sometimes the flow of Ch'i becomes blocked and out of balance. These disruptions to the energy flow begin in the mind with stress and fatigue or negative emotions such as fear, anger or resentment. I can support you to unblock any disruptions so you can be balanced and calm again.

Love and Blessings, Angel

**Text a
Psychic**

Pressed for time? Not a problem. It's so easy!
www.psychidlight.com/text-readings/



**No Unicorns
were harmed in the
writing of this article...**

Death of a Unicorn is a supernatural comedy horror film written and directed by Alex Scharfman. The cast includes our cover star Téa Leoni, along with Jenna Ortega, Paul Rudd, Richard E. Grant, and Will Poulter.

A24 Studio

The studio behind "Death of a Unicorn" is A24, which you might recognise from their other films such as "Hereditary," "The Witch," "Pearl," "Zola," "The Disaster Artist," and "Everything All at Once." "Death of a Unicorn" appears to combine A24's prowess in handling both horror and comedy effectively.

A24 doesn't give away much in the synopsis. They state, "A father (Paul Rudd) and daughter (Jenna Ortega) accidentally hit and kill a unicorn while enroute to a weekend retreat, where his billionaire boss (Richard E. Grant) seeks to exploit the creature's miraculous curative properties."

Plot

The trailer (which you can watch below) gives a bit more information about how the film unfolds.

Upon discovering the mystical creature, Dell Leopold, a wealthy businessman, sees a chance to capitalise on the animal's healing abilities. However, his grand aspirations are thwarted as the unicorn's partner returns to seek revenge against Dell for his selfish intentions.

Drawing parallels with the Icelandic horror film "Lamb," "Death of a Unicorn" enters the realm of animals, both real and imaginary, rising up against humans who have exploited them and their environments. This latest addition to the animal rebellion narrative introduces mythical elements and tonal shifts characteristic of an A24 production. The contrasts extend beyond genre blending to include a soundtrack that combines unexpected influences, such as a cover of 'Good Vibrations' by The Beach Boys alongside compositions by horror experts John Carpenter, Cody Carpenter, and Daniel Davies.

<https://a24films.com/films/death-of-a-unicorn>

Cast

Jenna Ortega leads a star-studded cast in the upcoming film. We featured her in the Free Spirit September 24 edition for her role in Beetlejuice Beetlejuice, and she is also known for portraying 'Wednesday' on Netflix and appearing in recent 'Scream' movies. She is joined by renowned actors such as Paul Rudd (known for "Only Murders in the Building"), Will Poulter (who will appear in "Guardians of the Galaxy Vol. 3"), Téa Leoni ("Madam Secretary"), and Richard E. Grant ("Saltburn"). Anthony Carrigan ("Barry") and Sunita Mani ("Spirited") were also seen in the trailer.

Release

In the UK the film is showing from the 4th of April, its released a few days earlier in America on the 28th March.



Relationship Tarot Readings: Identifying 'Red Flags' in a romantic partnership

Relationships are full of both joyful and challenging moments. However, when it's your own, it can often be hard to clearly see potential problems. This is where Tarot readings are greatly beneficial, offering insight into the dynamics of your relationship, this type of reading will let you see red flags that otherwise might go unnoticed so that you can make more informed decisions about your love life.

Understanding Relationship Tarot Readings

Relationship Tarot readings are designed to focus on the emotional and energetic connections that bind partners together. In essence, these readings go into detail about the different areas of your relationship, giving you a bigger picture, which is pretty hard to gain on your own. Using careful interpretation of the cards, a good Tarot reader will uncover hidden issues, patterns, or concerns that may be at play in your relationship.

Common Red Flags in Relationships

Before we delve into how Tarot readings can guide you, it's important to understand what red flags really are. Red flags are the warning lights that come up and tell you that something's a little off. They are the subtle signs that indicate potential problems or unhealthy dynamics within a relationship.

These warning signs shouldn't be ignored, as they often point to underlying issues that could grow into bigger problems if left unaddressed. Recognising these red flags early on is crucial for maintaining a healthy relationship and ensuring that both partners are on the same page.

Red flags can manifest in various ways, such as:

- **Communication issues:** When one partner avoids communication or shuts down entirely.
- **Controlling behaviour:** When one partner tries to dominate or control the other.
- **Disrespect:** This involves a lack of mutual respect, where one partner belittles or dismisses the other.
- **Dishonesty:** When one partner frequently lies or conceals crucial information.
- **Emotional unavailability:** A partner who is distant, seemingly uncaring, or unwilling to connect emotionally.

How Relationship Tarot Readings Reveal Red Flags

• Showing communication barriers

Relationship Tarot readings can highlight communication problems that may be masked. If you feel you and your partner can't talk openly about problems, a Tarot reading may assist you to reveal the cause of this—it may be fear, trauma, or unfinished emotions that set up barriers, allowing you to constructively address these.

• Controlling Dynamics Come to Light

A Tarot reading could identify an imbalance in a relationship. As your eyes are opened with the reading, you will start to realise the forms of control that were previously hidden. This awareness will set you on your way towards creating a more balanced and respectful relationship dynamic.

• Revealing Disrespectful Behaviour

Disrespect in relationships can manifest in very subtle ways, from put-downs to more overt behaviour. The clarity of perception you get from Tarot readings makes it easier to see these patterns—when disrespect is occurring. Recognition is important in approaching the situation and securing that both partners have the respect they deserve.



• Bringing to Light Deception or Dishonesty

Trust is the foundation of any strong relationship, and dishonesty can quickly erode that foundation. Tarot readings let you notice in case things simply don't add up—thereby urging you to investigate the situation further. It could be little white lies or larger deceptions; a reading can offer clarity into passing through such challenges.

• Identifying Emotional Disconnection

If you feel you or your partner are having problems in being emotionally intimate with each other, a Tarot reading could enable you to identify exactly what caused the break in this connection. Bringing this to the surface, provides the potential for you to work on rebuilding this and fortify that bond even further.

• How to apply the revelations from your Tarot Reading

When a relationship Tarot reading reveals red flags, it can create uncomfortable conversations within your relationship. It's important to approach the situation with care and sensitivity.

Here's what you could do:

- **Meditate:** Consider what the reading has revealed about your relationship. Are there issues that have crossed your mind? Have you observed similar patterns?
- **Communicate:** Start with the insights that you got from the reading, and have an open and honest conversation with your partner. Share the things that have been learnt and how you both can correct the concerns.
- **Seek Support:** If the readings bring up some serious concerns, then perhaps talking further, to a friend, counsellor, or some other professional who can bring in his/her perspective into the matter and provide guidance, will be quite effective.
- **Have Faith in Your Intuition:** While Tarot has a great deal to offer in giving insights into love life matters, always listen to your gut feelings and intuition about your relationship. You know best what is good for you.

Ready to Gain Clarity in Your Relationship?

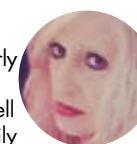
Navigating the complexities of a relationship can be challenging, but you don't have to do it alone. A Relationship Tarot Reading can offer you the guidance and clarity you need to identify potential red flags and make informed decisions about your love life. Whether you're just starting a new relationship or feeling uncertain about your current situation, Tarot can provide the insights you need to move forward with confidence.

Take the first step towards a healthier, more fulfilling relationship:

Why not connect with one of our experienced Tarot readers today and discover what the cards reveal about your love life.

www.psychiclight.com/psychics/
www.psychiclight.com/category/tarot/
www.psychiclight.com/psychic-availability/

To **Aelissa** Tarot is the most versatile reader tool. She feels that the reasons and causes behind issues can be clearly seen; timescales are more accessible and probable outcomes clearer. As well as a client's questions being more easily highlighted. **PIN: 4444**



Alice generously offers her connection to Spirit to guide you but can also use various methods to connect you to that source. She has special expertise with Tarot cards. She can also offer Angel cards, Enlightenment cards, crystal ball

and more. **PIN: 6543**

Mariah can use Tarot cards, pendulum, crystals, clairvoyance, mediumship or a combination of all – whatever suits you. Mariah can read living energies as well as she can read those in spirit and specialises in bringing clarity to situations and relationships which are causing you pain and stress.

PIN: 1881



Toby is a natural clairvoyant of Celtic descent. He employs various tools to delve into the heart of matters, with his preferred method typically starting with Tarot and then progressing from there.

PIN: 2333





One of the least common and often overlooked creatures in folklore are Will O The Wisps. Often dismissed as being small and insignificant, these creatures are in fact mesmerising and magical. In Latin the name Will O The Wisp means foolish flame and it is described as an “atmospheric ghost light seen by travellers at night”.

Faerie Realms

In the UK this phenomenon has a variety of names including Jack O Lantern, Friar's Lantern and Hinkypunk. These are all Will O The Wisp variations on the same myth. There are many stories throughout folklore of travellers being drawn to flickering lights and flames at night and becoming lost, never to be found again.... or to return many years later. Will O The Wisps are considered to be a part of the Faerie realm and lore; however, they are elemental spirits that stand alone in their own lore and ways also.

Wisps

The most common way in which the Wisps work is to show themselves to travellers at night, draw their attention away from the safety of roads and well-known paths and lead them onto more treacherous routes such as marshes, bogs and deep forests. As with all Faerie creatures they thrive on chaos, discord and emotional upheaval, enjoying causing humans to lose their way and even dying as an outcome of this. They love to

play games and confuse any human who crosses their path. Although Wisps are seen as mischievous and even sweet when compared to other creatures, they are often quite malevolent in nature and not simply pretty flames as they show themselves to be.

Guardians of Treasure

There are also stories of Wisps being the guardians of large collections of treasure. These stories tell of how any human brave (and canny) enough to follow them without being caught unawares could find these treasures for themselves. As always though, taking riches from Fae creatures very rarely ends well!

Some believe Wisps to be spirits of the dead, unable to leave the Earth realm and therefore stuck causing havoc and playing with weary travellers.

Sweet Offerings

Whatever the true root of the Wisps nature it is clear that these seemingly beautiful and sometimes even cute creatures actually pack a punch! Travelling at night or alone can be unnerving at the best of times, but next time you see a little flicker out of the corner of your eye and feel tempted to investigate, it may be best to carry on your way instead, maybe even leaving a small sweet offering to any Wisps around to appeal to their better nature.

Best wishes as always,
Sarah – PIN: 9888

7 COMPELLING REASONS TO EXPLORE ASTROLOGY

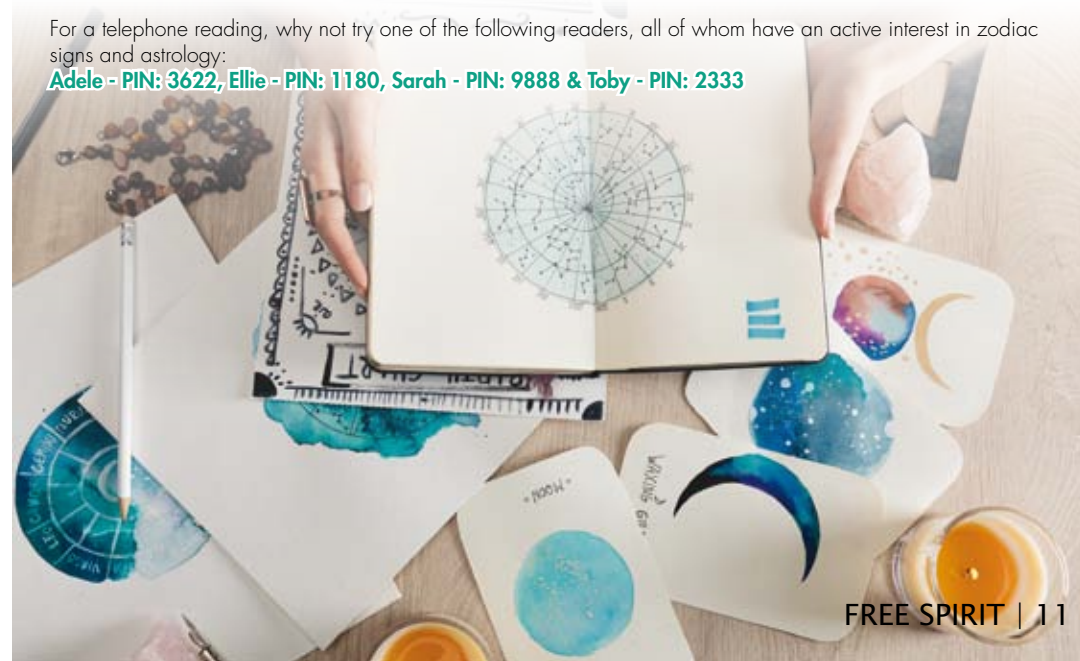
Astrology stands out as a widely recognised divination method in today's world. While many may link astrology with the daily horoscopes seen in newspapers, these are just the tip of the iceberg. This ancient and intricate science has roots dating back thousands of years, offering a profound way to explore the mysteries of life.

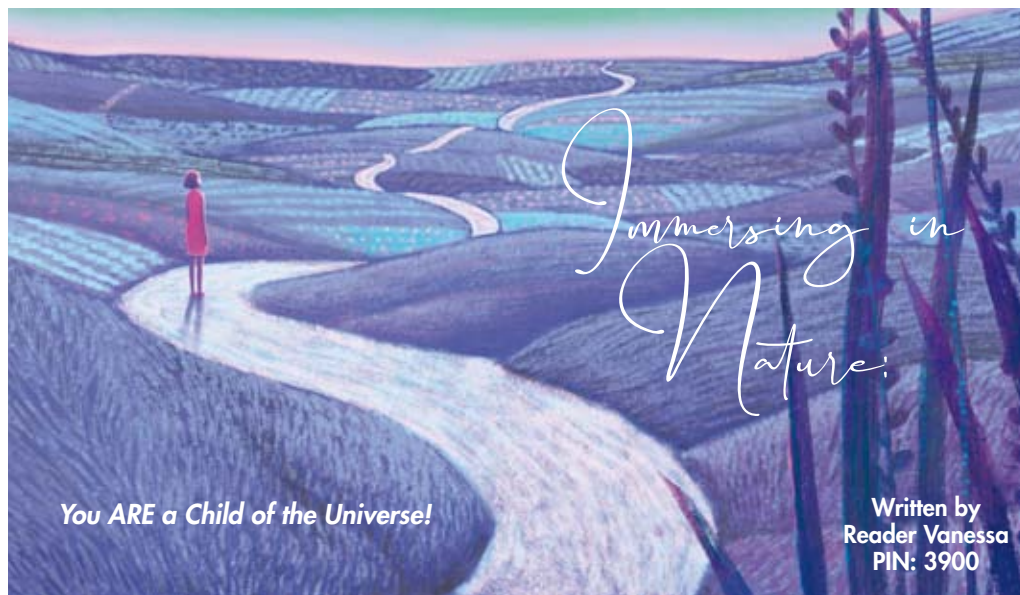
Modern belief in astrology hovers around 25%, showcasing its enduring appeal. If you're curious about astrology or unsure of its benefits, here are seven compelling reasons to delve into this fascinating field:

- 1. Self-Discovery:** Delve into astrology to gain deeper insights into your strengths, characteristics, and personality traits. Understanding your astrological profile can shed light on your behaviours and reactions, helping you appreciate what makes you unique. www.psychiclight.com/your-journey/discover-your-destiny/
- 2. Understanding Others:** Learning astrology enables you to better comprehend those around you. By studying birth charts, you can enhance empathy and communication skills, fostering harmonious relationships.
- 3. Relationship Insights:** Analysing birth charts can offer valuable insights into various relationships - be it with friends, family, partners, or colleagues. This understanding can pave the way for improved interactions and mutual respect. www.psychiclight.com/your-journey/relationships/
- 4. Love Guidance:** Astrology serves as a powerful tool for navigating love and relationships. By examining your birth chart, you can discern what qualities you seek in a partner and align your search accordingly.
- 5. Career Path Clarity:** Utilise astrology when making career decisions to identify your strengths and ideal professional path. Understanding astrological influences can guide you towards fulfilling work opportunities. www.psychiclight.com/your-journey/business/
- 6. Timing Advice:** Astrology provides cues on optimal timings for important life events like starting a family or launching new ventures. Let astrology be your guide when deciding 'when' to take significant steps forward.
- 7 Historical Insight:** Studying astrology offers an opportunity to delve into a subject rich in historical significance that spans centuries of human civilisation's evolution. Uncover new perspectives by exploring astrological themes in literature, art, and history texts.

For a telephone reading, why not try one of the following readers, all of whom have an active interest in zodiac signs and astrology:

Adele - PIN: 3622, Ellie - PIN: 1180, Sarah - PIN: 9888 & Toby - PIN: 2333





April brings signs of Spring all around us, and with the longer daylight hours and warmth returning to the ground we are prompted by Mother Nature to **go out into the fresh air** and refresh our connection to the natural world.

Finding and developing a deeper connection with nature can **still the mind**, filling us with focus and enabling us to find a sense of peace that leaves us unruffled when life takes a sideways turn. Breathing mindfully whilst immersing ourselves in the woodlands, fields and streams allows us to connect with an inner wisdom passed down the generations and we find ourselves **communing with nature's soul** at the very deepest level. Our ancestors lived closer to the land than we do in modern life, but by noticing the changes in the landscape, the creatures that share it with us and the plants and trees that grow around us, we can foster that deep connection for ourselves too.

Going for a walk in the rain (okay, not a deluge but light rain is actually pleasant), we notice the sounds and the scents that the moist air brings to our senses. The scent of dry earth after rain falls has a particularly **therapeutic effect** and even has its own name – “Petrichor”, from the Greek words “petra” meaning “rock”, and “ichor” which refers to the golden lifeblood of the gods in Greek mythology. That “earthy” scent is so refreshing to our senses, it’s worth putting on your raincoat and going outside to take a few deep breaths of this free feel-good compound in the air!

Strolling on the beach, paddling in a stream, a moment spent looking at the stars, even a cuppa in

the garden will connect you to nature if you allow yourself to **disconnect the daily mind-chatter** for a moment. When we gaze at the night sky we are struck by the endless nature of the starry universe. Letting us put things into perspective, this really is the “bigger picture”. It’s interesting to note that we share 97 percent of our atomic makeup with the stars themselves. **You really ARE a child of the universe.**

Lots of the tiredness we feel can be attributed to over stimulation of our body’s stress response, so combining the **breathing techniques** we looked at in January’s issue of Free Spirit with time in nature will re-set your mind, body and spirit to hear the unspoken messages of nature.

www.psychiclight.com/breathwork/

It can be a nice practice to find a place to sit in on a regular basis for, say, half an hour a couple of times a week. You will begin to notice changes; the different birds and animals that visit at different times of the day, and with the changing of the seasons what plants are most abundant. This could be a place in the countryside or even a bench in your local park, but the key thing is to go often and sit to connect with the place and the nature within it. Journaling what you notice will give you a record to look back at and it’s a great way to record your feelings and how nature let you find what you needed on that day.

**Remember,
self-care
is never selfish!**

Vanessa



COLOUR: Green **FOCUS:** Harmony & Healing

CHAKRA-HEART (Anahata):

Air element – Expressing balance involves showing unconditional love towards ourselves and those around us.

We’ve introduced the Angels of Ray’s, and featured Archangels Uriel, Gabriel and Jophiel, today it is the turn of Green Ray – Archangel Raphael.

The Green Ray, the fourth ray in the visible rainbow spectrum, impacts the Heart Chakra on a physical level (third dimension) and serves as a transmuting ray for the Third Eye Chakra (fourth dimension). The spiritual ray is defined by its shimmering emerald green hue, reminiscent of the most exquisite emeralds used in jewellery.



Archangel Raphael embodies the healing essence of the divine. He is recognised as the healer within the angelic domain, offering divine healing for self-recovery and aiding in discovering inner direction, love, empathy, equilibrium, and motivation to facilitate others’ healing journeys.

Raphael, one of the seven ruling angels or princes, is among the three angels acknowledged by the Christian Church, alongside Michael and Gabriel. He holds the title of chief guardian angel and is revered as the patron saint of travellers. In various depictions, he can be seen with a caduceus or portrayed as a pilgrim carrying a staff in one hand and either a bowl of healing balm or a fish in the other.

Physical, Emotional and Mental Associations

Physical connections - Green symbolises nature and occupies the central position in the colour spectrum. It promotes balance, tranquillity, and relaxation while fostering personal development through harmony. This colour helps maintain a dynamic equilibrium of mental and physical energy, releasing pent-up tension. Aligned with nature and the Devic Kingdoms, green is associated with healing practices. The Green Ray is utilised for alleviating tension headaches, migraines, gastric ulcers, digestive issues, stress-related conditions, and highly agitated emotional states. Additionally, it aids in easing heart, lung, and thymus ailments.

Emotional and Mental Benefits - Green Ray provides relief from claustrophobia and feelings of being restricted on an emotional level. It helps in stabilising the nervous system, calming emotions, and decreasing mental confusion. Additionally, it has a soothing effect on all senses and supports the cultivation of positive relationships with others.

Spiritual Connections - The Green Ray is linked to spiritual growth, fostering divine sight, intuition, and insight by promoting balance and harmony. It boosts creative visualisation skills and manifestation abilities. Archangel Raphael, as a guiding angel of healing, supports us in our healing endeavours with great capacity.

Explore the profiles of numerous readers with strong ties to the Angelic realm on our website:

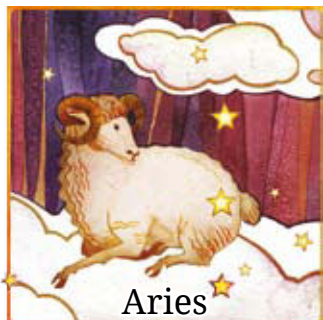
www.psychiclight.com/psychics/

Astrology

With our
expert:

Chrystalyte

Welcome to Free Spirit's in-depth
horoscopes for April 2025



Aries

Neptune has now entered Aries, which is no small thing and reflects an impact that will go on for years to come. The energy is much more upbeat than the previous Pisces focus and indicates faster movement around areas that seemed stagnant or hard to fathom before. New understandings and access to fresh places, ideas and company could do a lot for improving your networks and day to day momentum. Saturn is still lagging behind, which may cause the brakes to go on late next month. Make hay!



Taurus

Venus is on good terms with Mars, suggesting it's easier to get on the right side of someone who's usually a bit prickly. Try not to fret if anything seems slow-moving or anyone else stands in your way for a while, as things are almost sure to shift on or soon after mid-month when Venus changes direction. This planet has been on a kind of go-slow for a while, but likely opening space for a review of how you handle certain situations, especially around relationship connections. The channels are clearing!



Gemini

Breathe a sigh of relief as Mercury returns to forward motion in Pisces for the second week in April and then enters Aries mid-month. The only way is up, basically! You can at last pick up on projects that have been on hold, or on a go-slow energetically. Maybe you get the green light for a significant change that's going to affect your mobility or group of contacts, or both. Mercury is hot on the heels of Neptune, also, which suggests sea or water-based activity becoming more appealing or beneficial.



Libra

Whilst Venus has retrograded back to Pisces, the flow in a certain relationship may have felt awkward, perhaps coinciding with someone withdrawing. But Venus will turn forward again in mid-April, bringing a sense of progress & new life in whichever direction makes the most sense. If you've been trying to work out what's right for you, then the connections are likely to add up more clearly in the coming weeks. Venus connecting twice with Saturn suggests recognising some true limits. Uranus adds a special surprise or refreshing development.



Scorpio

Scorpio's two planetary rulers, Pluto and Mars, mean more plates to spin, but often a richer result from managing dual areas of life's tapestry! It may feel like both everyday, mundane and higher input coming your way, but the everyday sector may be the more transformative one now, Uranus and Mars bringing in sparkling new energy. Change may seem challenging but resisting it tends to futility. The flow could happen easier than it has for a while with Mars in your fellow water sign of Cancer, so go with it!



Sagittarius

Equilibrium appears to be the target early this month, with Jupiter passing the midway point in Gemini. You may well feel your energy for a certain project or relationship is soon on the wane, however. It will have had its reasons and its season and the ground needs to be prepared for something else. A lively and positive link with the Sun in Aries suggests a new seed planted showing signs of development before too long, besides. It's finally time to attend to more of your own needs and desires.



Cancer

It's still a case of work with the mixed energy that's on offer around Mars in Cancer, during the first half of this month. You may have days when you're full of beans, and possibly manage ones where you're closer to rock bottom, or running on empty. What possibly matters the most is that you're on a journey of sorts, and, overall, make sufficient progress. You are not without support or company, if that's what's needed. Though may need patience whilst some people deal with their own schedules and issues.



Leo

The Sun and Jupiter are great cosmic pals early in April, which suggest you can't really put a foot wrong! So be ready to take advantage of opportunities, especially if they involve trying something different or meeting new people. Trickier connections between the Sun, Mars and Pluto across April 21st-23rd suggest a few challenges are on the way, but none you cannot face and overcome if you're willing to put boxing gloves on! You may prefer to give way to an adversary, which could, surprisingly, also manifest a workable solution.



Virgo

Any trudging through water sensation, or trying to keep your head above the surface should begin to fade once Mercury changes direction in Pisces around April 7th. Whatever crawled out of the woodwork in recent times may either quietly scuttle off, or show you something meaningful about what you really feel and believe in. Even the most taxing of situations can have an upside or present a silver lining, provided you look for it! Mercury will sail on into fiery Aries mid-month, adding greater confidence and wind to your sails.



Capricorn

For the first fortnight of April Mars remains in your opposite sign of Cancer, hinting at complications with or irritations around other people. Part of a success strategy could be in accepting fluctuations of mood or physical situations that affect performance. If a timetable has extra time built in, this should help to make things easier. Saturn links twice with Venus either side of that planet changing direction midmonth. It seems a situation won't be fully done even if initially seeming that way; there's a second chance on offer.



Aquarius

Uranus connections with multiple planets this month, namely Mars, Saturn and Venus. It seems you're able to stir and shake a few situations towards a better direction. You might be sowing small seeds for the future; in other cases, seeds were already sown in the past and now you can start to reap some of the rewards. Or you can do if you're prepared to reach out and connect with others and make the most of opportunities on offer. With Mars in Cancer, a greater sense of belonging can develop.



Pisces

Your ability to make progress in desired situations tends to ease when you can disconnect from worry and just focus on the task in hand. Neptune is taking root firmly in Aries, which means being more present and working at speed. All of this could add up to finding greater joy and a generally stronger sense of being fully alive! A Sun-Jupiter connection adds to this environment of being in the light and experiencing greater zest. Mercury and Mars with Neptune mean intuition helps you move up or downstream accordingly.



Discover Your Future, Release Your Past

Insightful Readings with Sincere Psychics and Mediums

You want the **best quality readings possible** and our psychics and mediums offer just that!

Do you need answers to life's burning questions? Do you need to know where your relationship is going?
Do you seek to communicate with a loved one in Spirit?



CARD PAYMENT
0800 915 2347

**£32.95 for
20 minutes**



PRE-PAY MINUTES

**psychiclight.com/
pre-pay-minutes/**

Offers Best Value

20 minutes costs only £30
10% free minutes available
Top up & call 24/7



PAY BY PHONE BILL
0906 111 0901

**£1.50 per
minute**

One to one readings with sensitive, highly gifted mediums and psychics

For Love & Relationships call

0906 111 0902

£1.50 per minute

For Amazing Mediums call

0906 111 0903

£1.50 per minute

Psychic Email Readings

psychiclight.com/email-readings/

Ask 3 specific questions. £39.95
Detailed written answer within 72 hours.

Relationships Business Couples Bereavement Family Sexuality Wellbeing Divorce

www.psychiclight.com